

Nasco/Simulaid's OB/GYN and Birthing Training Laboratory

Female Pelvis Model with 8-Week Embryo (3 Parts)
LA00252U

25-Part Dual Sex Torso
LA00105U

Pregnant Pelvis with Mature Fetus Model (2 Part)
LA00256U

Embryo Development Set
SB39006U

Life/form® IV Arm
LF03637U

Full-Term Pregnancy
Pregnant Woman Model
SB23480U

Life/form® Female Cath-Ed 2 Simulator
LF01026U

Life/form® Female Catheterization Simulator
LF00856U

Life/form® "Surgical Sally" Bandaging Simulator
LF00929U

Front Back

Life/form® Venatech IM & SubQ Simulator
LF01184U

Nita Newborn™ Infant Venous Access Simulator
SB23925U

CPR Cathy™ Infant Manikin
PP01175U

Breast Vest
SB14915U

Advanced Infant Intubation Head
PP00130U

Life/form® Airway Simulation Board
LF03687U

Airway Closed Airway Open

Ideal for showing proper technique!

Life/form® Advanced Venipuncture and Injection Arm — White
LF01121U

Deluxe Life/form® Auscultation Training Station
LF01200U

Nasco/Simulaids OB/GYN and Birthing Training Laboratory

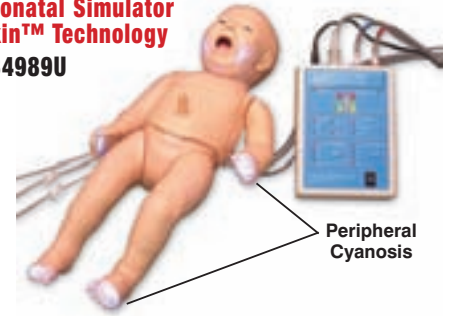


Human Reproduction and Development Kit
WA15715U



NOELLE™ Maternal and Neonatal Birthing Simulator with PEDI® Blue Neonate
SB37713U

PEDI® Blue Neonatal Simulator with SmartSkin™ Technology
SB34989U



Peripheral Cyanosis



PEDI® Premie Simulator with SmartSkin™ Technology
SB37545U



Midline



Right Mediolateral



Left Mediolateral

Life/form® Episiotomy Suturing Simulators
LF01038U



Life/form® Birthing Station Simulator
LF01070U



Cross section of pregnant overlay containing fetus



Obstetrical Manikin
PP00180U



Pelvic Bone with Fetal Heads on Stand
PP00195U



Life/form® Pelvic Examination Simulator Set
LF01062U



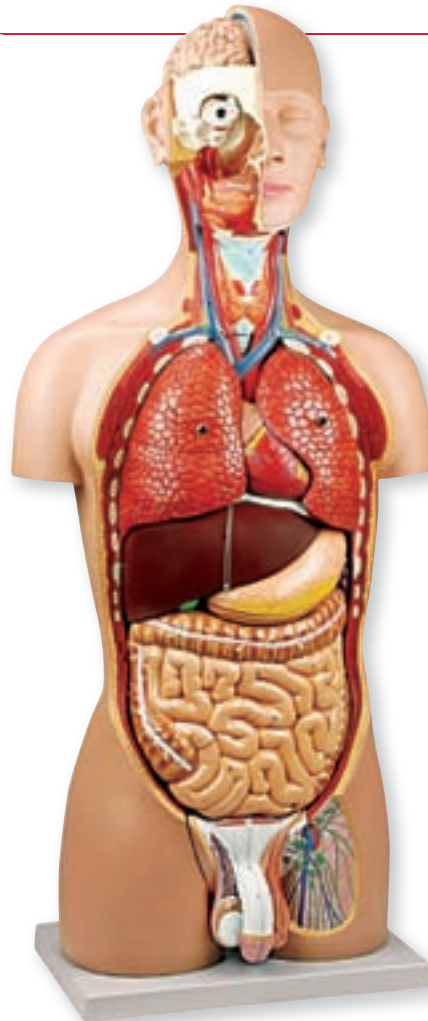
Life/form® Deluxe Infant CRiSis™ Manikin
LF03718U



Life/form® Special Needs Infant — White Female
LF01193U

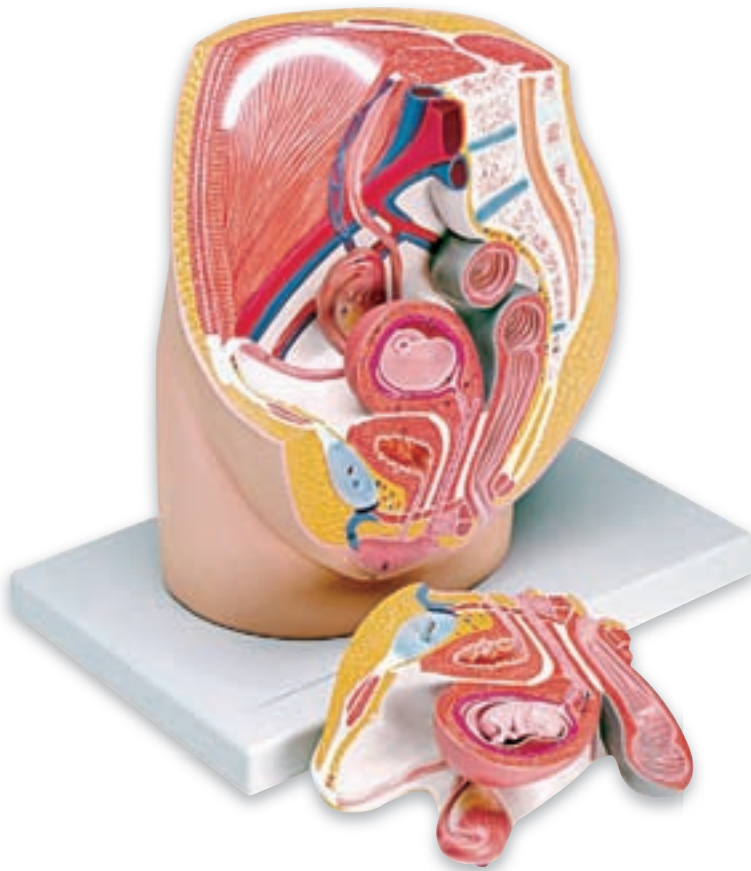


PDA STAT Baby
PP00401U



Dual-Sex Torso — 25 Part

Complete, life-size torso provides exceptionally realistic reproduction of anatomical structures in fine detail. Neck is dissected to expose muscular, neural, vascular, and glandular structures. Torso includes the following removable structures: eye with optic nerve and extra ocular muscles; half of the brain, divided along the longitudinal fissure, showing internal structures and blood vessels; trachea; descending thoracic aorta and esophagus; right and left lungs (two parts each), showing internal features and vessels; two-part heart depicting atria, ventricles, valves, and section of heart wall; pancreas, duodenum, and spleen with vessels and ducts; and small and large intestines with removable cover over portion of caecum. Thorax and abdomen are completely open, providing an unrestricted view of all internal features. Additional removable structures include: stomach and male and female urogenital systems (four parts each), sectioned medially with views of internal structures. Significant structures are numbered and referenced on the accompanying key. Many additional features are covered in the Human Torsos CD-ROM Guide included with torso. Mounted on base. 35 $\frac{3}{8}$ " x 13" x 9" (90 x 33 x 23 cm). Sh. wt. 20.50 lbs. (9.30 kg). **LA00105U**



Female Pelvis Model with 8-Week Embryo (3 Parts)

Life-size model composed of three parts gives an internal view through the median sagittal section of the pelvis. Shows the internal organs of the female urinary and reproductive systems with an eight-week embryo in utero. Mounted on base. 9 $\frac{7}{8}$ " x 7" x 10 $\frac{1}{8}$ ". Sh. wt. 6.50 lbs. (2.94 kg).

LA00252U

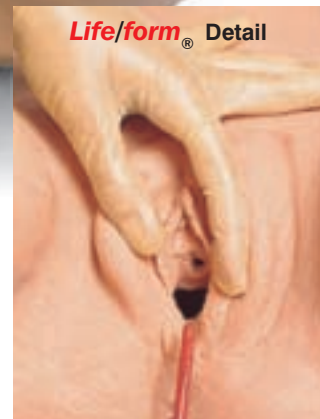


Pregnant Pelvis with Mature Fetus Model (2-Part)

This life-size model depicts the female human pelvis in median section with a fetus in the 40th week of pregnancy. The fetus is in the normal position prior to birth, showing the anatomical relationship between various structures of the maternal pelvis and the fetus. The fetus is detachable for closer examination. Mounted on base. 15³/₄" x 10¹/₄" x 14¹/₂". Sh. wt. 9.25 lbs. (4.19 kg).

LA00256U

Life/form®



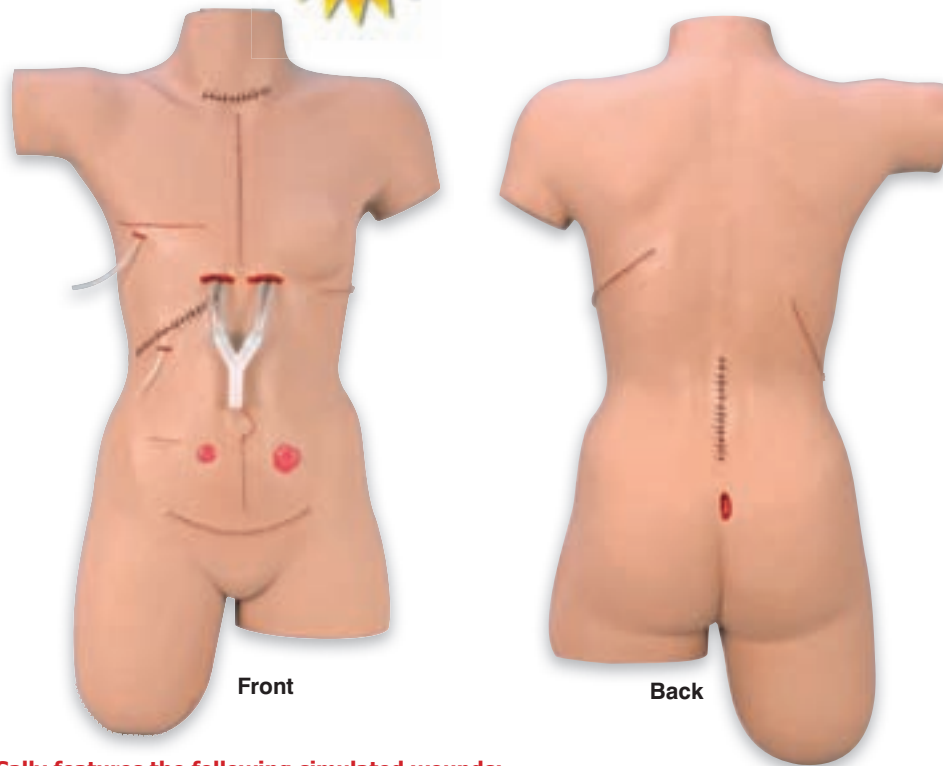
Life/form® Female Catheterization Simulator

The **Life/form®** Female Catheterization Simulator is constructed with a bladder reservoir, patient urethra, and a valve simulating the internal urethral sphincter. The normal feeling of resistance and pressure will be experienced as a catheter is passed through the urethra, past the sphincter, and into the bladder. When the catheter enters the bladder, artificial urine (water) will flow from the catheter as it would with a real patient. Just as in a real patient, the cuff must be completely deflated before the catheter is removed. Improper use of a Foley can result in damage to the simulator, just as when using a Foley catheter with a real patient. This simulator is the torso of a middle-aged woman with thighs abducted for proper position during catheterization. The external genitalia and perineum are molded in lifelike form. The labia minora can be spread apart naturally to reveal the clitoris, urethral opening, and vaginal introitus. Includes a hard carrying case, lubricant, catheter, and teaching guide. Three-year warranty. Carton size: 24" x 16" x 13" (61 x 41 x 33 cm). Sh. wt. 23 lbs. (10.43 kg).

LF00856U



Life/form®



Front

Back

Surgical Sally features the following simulated wounds:

- Abdominal Hysterectomy
- Appendectomy
- Cholecystectomy — With Simulated T-Tube
- Colostomy
- Ileostomy
- Laminectomy
- Laparotomy
- Leg Amputation Stump
- Mastectomy — With Simulated Drain
- Mid-Sternal Split — With Chest Tube Drains
- Nephrectomy
- Thoracotomy
- Thyroidectomy
- Sacral Decubitus Ulcer — Stage 2

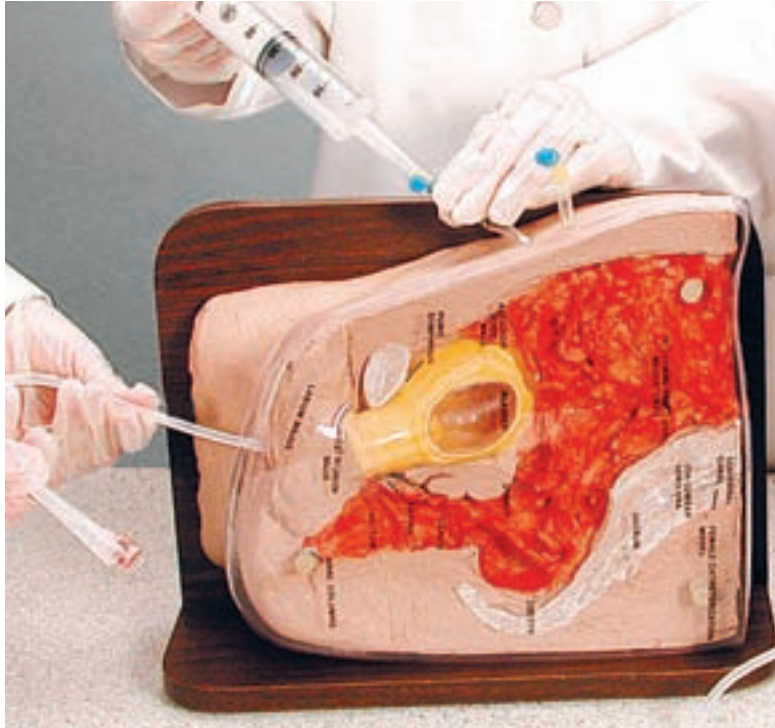
Life/form® “Surgical Sally” Bandaging Simulator

A readily available patient with 14 surgical wounds including a Mid-Sternal Split with two simulated drains, a Sacral Decubitus Ulcer — Stage 2, and a Leg Amputation Stump. The skin has also been reformulated so it is drier, allowing the bandages to adhere better. Wound closures feature surgical staples for the Mid-Sternal Split, Thoracotomy, Nephrectomy, Laparotomy, Abdominal Hysterectomy, and Amputation Stump. Staples and sutures cannot be removed.

Ideal for teaching wound management skills, dressing changes, and bandaging techniques. This simulator is just like a real patient, except the simulator remains motionless, never complains, and features wounds that won't bleed and closures that won't rip out. Students can conveniently practice wound management techniques, cleaning, and dressing changes.

Surgical Sally is a replica of a 29" x 17" female. Special vinyl formulations have been used to create the most lifelike look and feel possible. The flexible, flesh-colored skin realistically responds to adhesives and all types of bandaging procedures. Comes complete with hard carrying case. Size: 33" x 25" x 12" (84 x 63 x 30 cm). Three-year warranty. Sh. wt. 26 lbs. (11.79 kg).

LF00929U



Life/form® Female Cath-Ed 2 Simulator

This unique *Life/form*® simulator combines visual and tactile learning sensations of catheterization in one compact unit. The mid-sagittal dissections allow detailed study of the internal anatomy and provide students an opportunity to follow what happens when they catheterize a patient. The removable plastic cover identifies key anatomical structures. The Cath-Ed 2 provides practice in female catheterization. The vulva has been molded intact to facilitate identifying the urethra and proper spreading of the labia. A functional bladder has been incorporated to allow simulated urine to flow when the catheter is inserted properly. A Foley catheter can be demonstrated and seen through the viewing port. Includes a hard carrying case, lubricant, one catheter, 50 cc bulb, syringe, and instruction manual. Size: 15" x 14" x 8" (38 x 35 x 20 cm). Three-year warranty. NOTE: Dover Products was the original sponsor for these products. Sh. wt. 15 lbs. (6.80 kg).
LF01026U



Midline



Right Mediolateral



Left Mediolateral

Life/form® Episiotomy Suturing Simulators

These **Life/form®** simulators provide a realistic way for students to learn good surgical techniques. The simulators provide students with a variety of repair experiences without the constraint of time and concern for safety, which are factors with a live patient. The simulators can be used by the student in a learning lab with an instructor, or by the student individually in the clinical setting just prior to a patient experience. They are also useful as homework teaching aids that can be signed out at night and returned the next day. In addition to being portable, the lifelike texture allows the learner to develop a “feel” for instrument handling, tension on suture, and the advantages of one method of tying knots over another. Each simulator comes with an instruction booklet and is individually boxed. Three-year warranty. Sh. wt. 6.50 lbs. (2.94 kg).

LF01038U



All Palpable Landmarks



Normal

Abnormal

Life/form® Pelvic Examination Simulator Set

Life/form® Pelvic Examination Simulators are designed to facilitate the teaching, demonstrating, and practicing of pelvic examination for tumor detection. This **Life/form®** product consists of a set of two simulators. Each simulator is identical in outward appearance, as each was made from the same mold. However, the palpable internal structure differs. One of the simulators is considered “normal” and contains normal ovaries, cervix, and uterus. The other “abnormal” simulator has an ovarian cyst; the ovary has a solid tumor, and the uterus is indicative of leiomyoma uteri. Bony landmarks and normal and atypical organs are anatomically correct in size, shape, texture, and location. The tumor and masses are also placed to ensure anatomical accuracy, and they are texturally realistic. Palpation and manipulation with hands and fingers in and on the internal and external genitalia, abdominal wall, ovaries, and uterus can be performed with very realistic tactile experience. These simulators are intended for digital examination only; use of a vaginal speculum is not recommended. The Pelvic Examination Simulator Set includes two simulators (“normal” and “abnormal”), instruction manual, lubricant, glove, and two hard carrying cases. Three-year warranty. Sh. wt. 46 lbs. (20.86 kg).

LF01062U



Life/form®



Minus Two Station



Zero Station



Plus Three Station

Life/form® Birthing Station Simulator

Designed to facilitate demonstration and practice of palpating the internal birthing canal. The simulator clearly shows the relationship between the fetal head and the ischial spines of the pelvic bone of the mother during the birth process. The realism of this **Life/form®** simulator will help students bridge the gap from classroom to bedside with ease and comfort. The simulator is designed to highlight the ischial spines which are of great obstetrical importance. The line drawn between the ischial spines typically represents the shortest diameter of the pelvic cavity. The ischial spines can be readily felt during a vaginal examination, and serve as valuable landmarks in ascertaining the level to which the presenting part of the fetus has descended into the pelvis. The Birthing Station Simulator features a fetal head which will lock in any one of three lock stations. Minus Two Station shows the position of the fetal head when it lies above the ischial spines. Zero Station shows the fetal head directly between the ischial spines. Plus Three Station shows the fetal head below the ischial spines ready to enter into the birthing canal. The **Life/form®** Birthing Station Simulator includes teaching guide and hard carrying case. Three-year warranty. Size: 23" x 14" x 7" (58 x 35 x 18 cm). Sh. wt. 24 lbs. (10.88 kg).

LF01070U



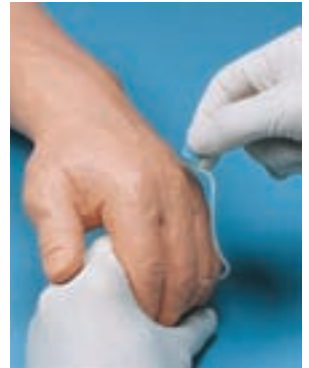
Life/form® Advanced Venipuncture and Injection Arm

- Complete Venous Access:**
- Basilic V.
 - Cephalic V.
 - Digital V.
 - Dorsal Metacarpal V.
 - Median Basilic V.
- Accessory Cephalic V.
 - Extensive Venipuncture System
 - Flexible Fingers and Wrist
 - Intradermal Injections
 - Intramuscular Injections
- Median Antebrachial V.
 - Median Cephalic V.
 - Median Cubital V
 - Replaceable Skin and Veins
 - Thumb V.



Venous Channels Beneath the Skin

Life/form® Realism



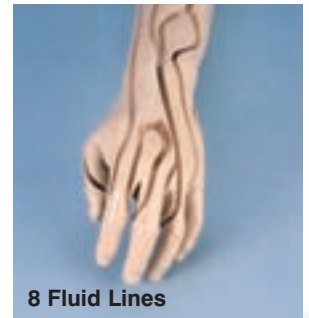
Life/form® Advanced Venipuncture and Injection Arm

This revolutionary training arm provides complete venous access for IV therapy and phlebotomy, plus sites for intramuscular and intradermal injections. An extensive 8-line vascular system allows students to practice venipuncture at all primary and secondary locations, including starting IVs and introducing Over the Needle IV Catheters. The venous system simplifies setup with only one external fluid bag supplying artificial blood to all veins simultaneously. The dorsal surface of the hand includes injectable metacarpal, digital, and thumb veins. The antecubital fossa includes the median cephalic, median basilic, and median cubital veins. Venipuncture can also be performed along the basilic, cephalic, accessory cephalic, and median antebrachial veins. Intramuscular injections may be performed in the deltoid muscle and intradermal injection sites are located in the upper arm. Intramuscular injections into the deltoid muscle are enhanced by the soft, lifelike skin and by the natural bony landmarks in the region. Intradermal injections using distilled water will create characteristic skin welts at designated sites on the upper arm.

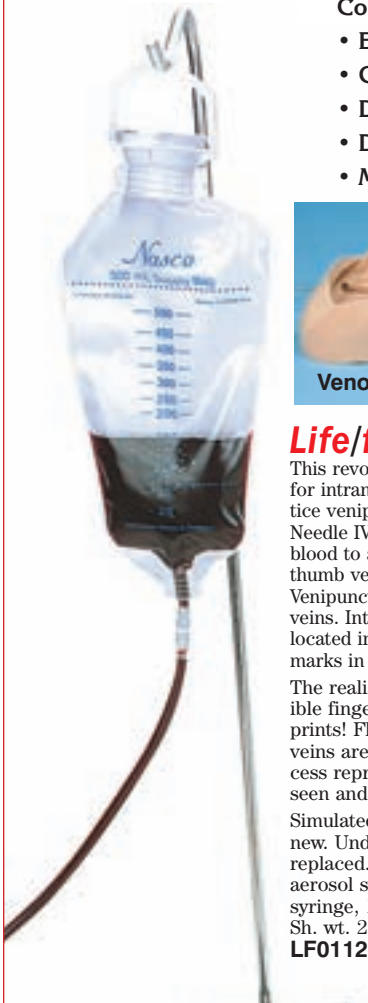
The realism of the **Life/form®** Advanced Venipuncture and Injection Arm is truly amazing. The soft, flexible fingers are molded separately with extreme attention paid to every detail — right down to the fingerprints! Flexion of the wrist helps students develop manipulation skills. The replaceable skin rolls as the veins are palpated, and a discernable “pop” is felt when entering the veins. The **Life/form®** molding process reproduces the fine details of the skin to make the arm look and feel alive. Valves in the veins can be seen and palpated on the skin surface.

Simulated veins and skins are completely replaceable to keep this training arm looking and working like new. Under normal use, hundreds of injections may be performed before the veins or skins need to be replaced. Complete replacement kits are available and easy to use. To extend the life of the veins, an aerosol sealant is available to seal punctures and prevent leakage. Includes 2 qts. simulated blood, 3 cc syringe, 12 cc syringe, needle, two fluid bags, instruction manual, and carrying case. Three-year warranty. Sh. wt. 22 lbs. (9.97 kg).

LF01121U White



8 Fluid Lines



LF01121U

- Realistic Flashback
- Easy to Use



Life/form[®] Venatech IM & SubQ Simulator
An innovative yet affordable simulator that is realistic in nature, with a chance for aspiration. Because there is fluid in vessels deep within the simulated tissue, there is an actual possibility of seeing simulated blood in the hub of the needle on aspiration. Students will be able to use critical thinking skills they have learned through didactic training and put those skills to use in a clinical simulation. The device fits on the area of the deltoid muscle as well as the vastus lateralis, rectus femoris, ventrogluteal, and dorsogluteal areas for realism. Pad measures 6¾" x 3¼" x 1½". Three-year warranty. Sh. wt. 1.75 lbs. (0.79 kg).
LF01184U White



Life/form® Special Needs Infant

Special needs infants require specific yet gentle care which includes the performance of vital medical procedures. This newborn-size infant allows health care facilities and medical staff to teach special procedures and develop a nursing care plan for special needs infants. The **Life/form®** Special Needs Infant was developed for a wide range of educational training, including beginning nursing students. Medical devices that can be used include: tracheostomy tube and suction catheter, gastrostomy tube, nasogastric tube, and urethral catheter. Other general cares that may be practiced include: bathing, diapering, and various dressing changes. Three-year warranty. Carrying bag included. Tracheostomy and gastrostomy tube not included.

Procedures that can be practiced include:

- Tracheostomy care (placement and suctioning) — size 8.0 mm
- Gastrostomy cares (lavage and gavage) — size 14 FR
- Nasogastric care (placement, lavage, gavage, and suctioning) — size 8 FR or smaller
- Urethra catheterization (insertion, placement, and care) — size 8 FR
- Colostomy stoma (basic care purposes only)

Sh. wt. 14 lbs. (6.35 kg).

LF01193U White Female



Deluxe Life/form® Auscultation Training Station

A Major Breakthrough in Auscultation Training!

The instructor selects from a menu of heart and lung conditions by wireless remote control. The manikin presents itself as a real patient without visible auscultation sites. The student must palpate to identify correct auscultation locations, and will hear different heart and lung sounds as the SmartScope™ is moved to different locations on the manikin. A diagnosis of the condition selected by the instructor can be made by comparing the variations in sounds occurring at different sites. Just like a real patient! Lung sounds can be detected at five anterior, 10 posterior, and two midaxillary locations. Students can practice auscultation at six anterior heart sites. The remote control does not have to be pointed directly at the manikin or SmartScope™ to operate. One remote control will operate multiple sets of SmartScopes™ and/or manikins simultaneously. Listen to the sounds by either using head-pieces on SmartScope™ or by connecting to an amplifier/speaker (not included). Range on the unit is up to 100 ft. of remote access. The Auscultation Board features 12 posterior lung locations: six upper posterior, four lower posterior, and two mid-auxiliary. Includes 16" x 20" (40 x 51 cm) posterior board (no case), adhesive patches to attach to case if desired, vinyl carry case, easel, and instructions. Three-year warranty. Sh. wt. 67 lbs. (30.39 kg).

LF01200U



Life/form® IV Arm

A special, extremely thin, synthetic skin, and rubber tubing with appropriately small lumen and thin walls. The cephalic and basilic vein are accessible, as well as the dorsal venous arch on the hand. Comes with two IV bags with clamps, one pint **Life/form®** blood, and winged infusion set. Three-year warranty. Size: 8" x 5" x 5". Sh. wt. 2.50 lbs. (1.13 kg).

LF03637U



The image displays the Life/form Airway Simulation Board, a medical training tool. It features two anatomical diagrams of the human head and neck in profile, illustrating the airway's position. The left diagram is labeled "Airway Closed" and shows the tongue falling back to obstruct the airway. The right diagram is labeled "Airway Open" and shows the tongue positioned forward, allowing for an open airway. A large circular magnification is provided for the "Airway Open" diagram, showing the internal structures of the mouth and throat in greater detail. The board is mounted on a white base with the "Life/form." logo. Below the diagrams, the text "Ideal for showing proper technique!" is printed.

Airway Closed

Airway Open

Life/form.

Ideal for showing proper technique!

Life/form® Airway Simulation Board

The Airway Simulation Board allows instructors to effectively demonstrate a closed and open airway. Jaw and head are moveable and show an accurate representation of the head tilt and airway opening or closing. Head is approximately the same size as a normal adult. Constructed of 1/4" (0.63 cm) Plexiglas®. Overall dimensions 9 1/2" x 12 1/2" (24 x 32 cm). Sh. wt. 1.50 lbs. (0.68 kg).

LF03687U



Practice:

- Airway Management
- CPR
- Intraosseous Infusion
- IV Procedures on Both Arm & Leg
- 4 Lead ECG Monitoring
- Umbilical Cannulation
- Palpable Brachial Pulse

Life/form® Deluxe Infant CRiSis™ Manikin

Everything you need in one manikin! This dramatic, state-of-the-art training manikin is a complete resuscitation system designed for teaching life-saving techniques for infants. Ideal for pediatric advanced life support, nursing, hospital, paramedic, and EMT training at every level. Tactile and visual realism combine to provide students with the most realistic training possible. The most comprehensive PALS trainer available, the Infant **CRiSis™** Manikin allows practice of 4-lead ECG monitoring, IV therapy, umbilical catheterization, airway management, intraosseous infusion, and CPR — all in one manikin! The unique chest skin with an umbilical cord allows practice of proper techniques in umbilical catheterization, including cutting and clamping. Fluid may be aspirated through the umbilicus, making this training manikin incredibly lifelike. An IV arm and leg allow for realistic practice of pediatric venipuncture. The cephalic and basilic veins are accessible on the IV arm, as well as the dorsal venous arch on the hand; the great saphenous veins are accessible on the IV leg, as well as the dorsal venous arch on the foot. An intraosseous infusion leg demonstrates and simulates the intraosseous infusion procedure. Featuring realistic anatomy and size, the airway management head is ideal for practicing airway management skills on an infant. With the addition of the Interactive ECG Simulator, 4-lead ECG monitoring may be practiced. Built-in circuitry allows defibrillation and pacing directly into the simulator and ECG rhythms can be monitored. The Interactive ECG Simulator also includes a conversion feature and pacing can be done on any manufacturer's defibrillator. Includes a hard carrying/storage case and hand-held Interactive ECG Simulator. Three-year warranty. Sh. wt. 17 lbs. (7.71 kg).

LF03718U

Procedures That Can Be Performed:

CPR

- Palpable and visual landmarks
- Fully articulated head, neck, and jaw
- Jaw thrust

Airway Management

- Realistic anatomy of the mouth, tongue, oral pharynx, larynx, epiglottis, vocal cords, trachea, and esophagus
- Oral and digital intubation capabilities
- Suctioning capabilities

IV Arm & Leg

- Smaller lumen tubing simulates the size of an infant's veins
- Realistic flashback from a pressurized system
- Replaceable skin and veins

ECG/Umbilical Cannulation Skin

- Arrhythmia recognition
- Learn proper techniques in umbilical catheterization
- Allows practice of umbilical cannulation, cutting, and clamping
- Aspirate fluid through the umbilicus

Intraosseous Infusion

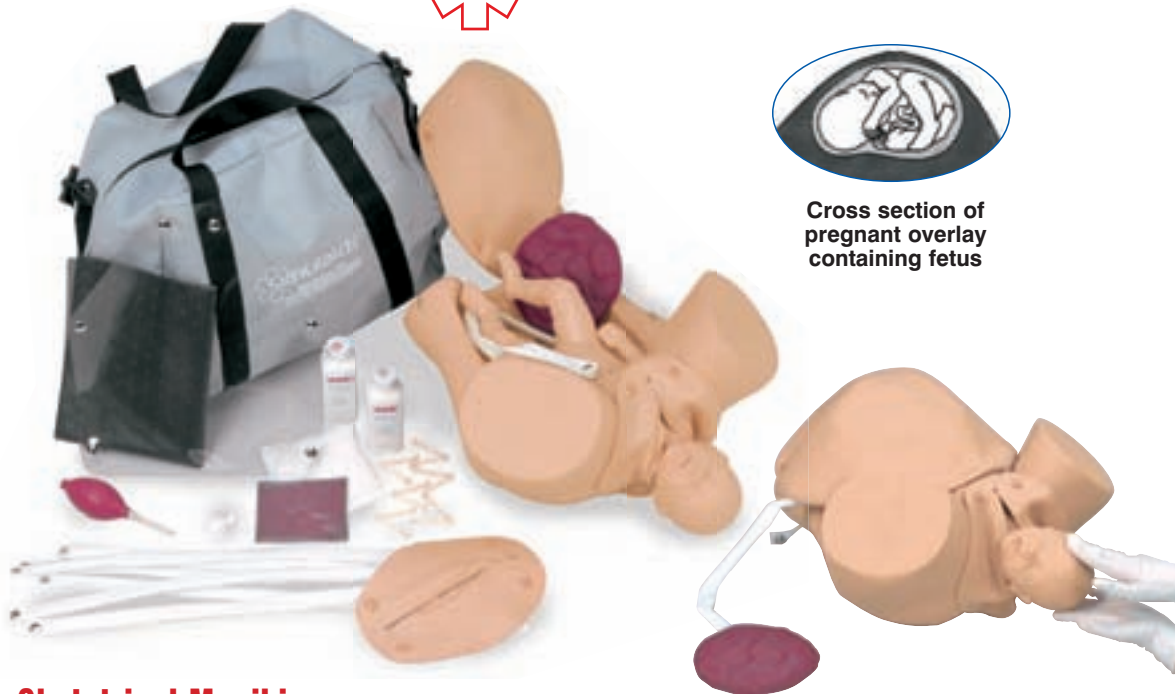
- Palpable landmarks include the patella, tibia, and tibial tuberosity
- Replaceable bones and skin
- Pressurized system allows aspiration of fluid



Advanced Infant Intubation Head

This station trainer incorporates the new lifelike skin technology. The advantages of durability and lifelike appearance, in association with the convenience of a lightweight stand, put this device at the head of the class for pediatric airway training. This new material eliminates tearing of the airway, saving the need for costly repairs caused by beginning student intubation attempts. Translucent property allows for lifelike illumination of the airway and neck as the skill is attempted. Vocal cords are highlighted for easy viewing, the tongue swells, and all the anatomical landmarks are present. Three-year warranty. Sh. wt. 4.38 lbs. (1.99 kg).

PP00130U



Cross section of pregnant overlay containing fetus

Obstetrical Manikin

An anatomically correct pelvic model with full term newborn and placenta to give your trainees realistic practice in multiple techniques, and to learn the procedure for emergency childbirth. Disposable umbilical cords with clamps, easily replaced extra vulva, powder to make simulated blood, a modular pregnant belly overlay with permanently installed fetus for training practice of Leopold's maneuver to determine the fetus' lie by palpating its skull and kneecaps, and a clear abdominal overlay to see positioning are all included. The lifelike pelvic cavity has pronounced pelvic landmarks, located spinal column, angled birth canal, ilium, ischium, sacrum, sacro spinous ligaments, and greater sciatic notch. The fetus provided is of a realistic newborn size with fontanels and cranial sutures. The manikin is available in white or black skin tone. A soft carry bag is included. Size: 21" x 13" x 17" (53 x 33 x 43 cm). Three-year warranty. Sh. wt. 28 lbs. (12.70 kg).

- PP00180U** White
- PP00180(B)U** Black



Pelvic Bone with Fetal Heads on Stand

A female pelvis and two fetal heads designed to demonstrate the birth process. The two interchangeable heads, one full term, the other premature, are fastened to a flexible shaft to allow passage, in different positions, through the pelvic outlet. Both fetal heads contain skulls with palpable cranial sutures and anterior and posterior fontanels. The models can also be used in demonstrating forceps and vacuum assisted deliveries. Size: 16" x 16" x 13" (41 x 41 x 33 cm). Three-year warranty. Sh. wt. 9 lbs. (4.08 kg).

PP00195U



PDA Warranty by Palm®.

PDA STAT Baby

PDA Baby brings you the full-features STAT Baby in electronic format. Utilizing the proven PDA programming of our adult trainer, PDA Baby allows the instructor to subtly change the physiological features of the baby to further challenge the student's assessment skills, and the track the session for later review. Scenarios can be set up utilizing the newly released Manikin Data Editor (MDE) programming to standardize sessions. Other uses of the MDE include student list creation, session editing, record archiving, and printing of records.

Includes the following standard features of the STAT Baby:

- Advanced intubation head with tongue edema and laryngospasm
- Chest tube insertion (left side only)
- Defibrillation
- 4-lead monitoring
- IM/SQ injection sites
- I/O leg
- PICC access site
- Pneumothorax reduction bilaterally
- Rectal medication
- Replacement parts
- Six pulse points
- Sternal retraction
- Three IV sites
- Urinary catheterization
- Very lifelike new skin material

Plus...the PDA Baby also includes these additional features:

- Aneroid blood pressure cuff
- Fully enclosed crib with waterproof surface
- Heart sounds
- Lung sounds
- PDA and programming
- 6-ft. (183 cm) teather assembly so that the baby can be handled
- Spontaneous breathing
- Voice sounds

PDA Baby satisfies every need in training for the post-neonatal care of pediatric patients. Utilize it to introduce the subject to students or challenge medical staff in emergency procedures that they rarely see. In either case, this affordable trainer augments your training budget by utilizing low-cost replacement items in those areas where repetitive, perfect practice makes perfect skill attainment. Includes IV vein kit (one arm and one leg), leg skin, 12 IO leg bones, four pneumothorax sites, two injection sites, one PICC line site, four reservoir bags, defibrillator adapters, interactive ECG simulator, simulated blood powder, and carry bag. Three-year warranty. Sh. wt. 94 lbs. (42.64 kg).

PP00401U 110 Volt

PP00401(EX)U 220 Volt



CPR Cathy™ Infant Manikin

This newborn infant CPR manikin can be filled with water to approximate the same weight and "feel" as real children of corresponding size. Realistic rise and fall of the chest is provided when air enters under the chest overlay. Torso features lifelike rib cage, sternum, xiphoid process, and suprasternal notch to help train effective compression technique. Ruggedly designed for effective flow-through cleaning and sanitizing without disassembly. Optional trouble-free electronics housed outside of the manikins offer a unique, patented system for monitoring correct performance during CPR training. Sensors activate lights and/or an audio signal to indicate correct lung ventilation, depth of compression, and correct finger or hand placement. Dressed manikin is shipped in a rugged nylon carrying bag with 12 disposable lungs. Three-year warranty. Basic. Sh. wt. 16 lbs. (7.26 kg).

PP01175U



Breast Vest

An incredibly realistic model that allows a woman to learn breast self-examination with both hands. Fits naturally over a woman's own breasts, and provides the added advantage of letting her look at the model from the perspective of her own body. Plus, it also allows the instructor to observe the technique the woman would use on herself. The Breast Vest contains nine lumps, all different in size and consistency to simulate realistic tumors. Washable with soap and water. Includes adjustable Velcro® neck and back straps.

Sh. wt. 13 lbs. (5.89 kg).

SB14915U



Full-Term Pregnancy

Pregnant Woman Model

A life-size median section of a female in the ninth month of pregnancy is shown in this three-part model. The placenta is in the uterus, and the fetus is removable. Sh. wt. 16 lbs. (7.25 kg).

SB23480U



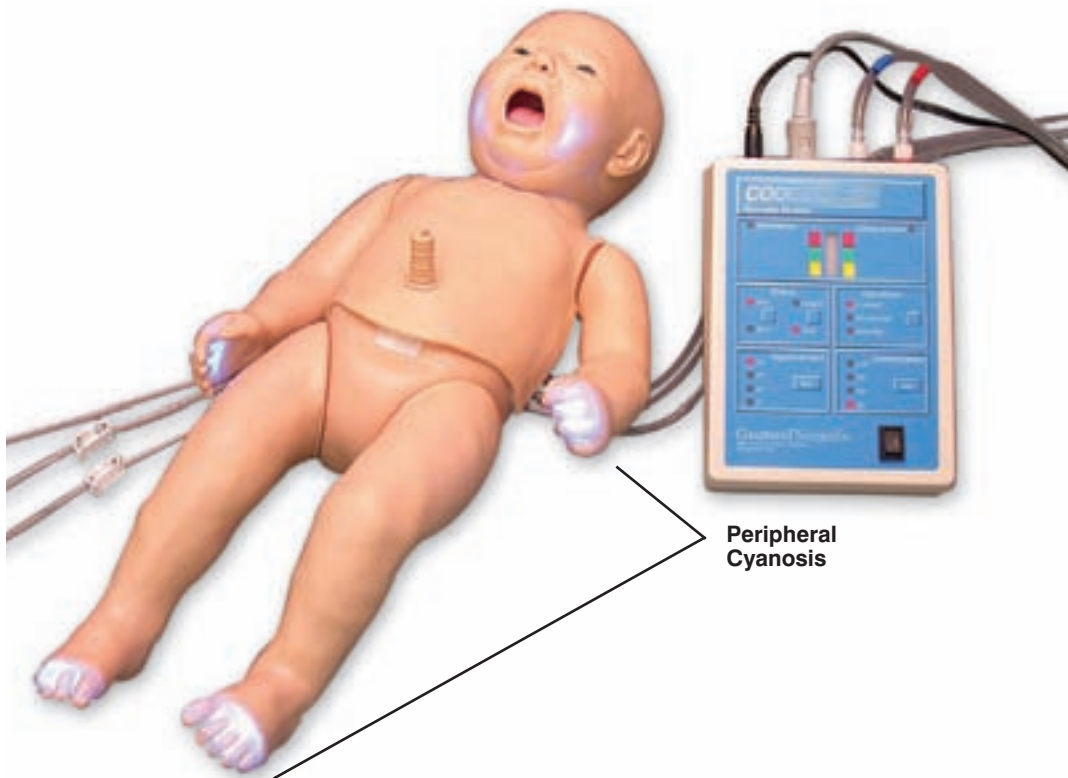
Nita Newborn™ Infant Venous Access Simulator

A unique, anatomically correct representation of a 4-lb., 16" female baby developed to teach and practice the vascular accessing of newborns and infants. Practice accessing, securing, dressing, site care, and maintenance for standard venipuncture, central catheters, PICC lines, and umbilical 5 FR catheters.

- **Access the median basilic and axillary veins on the right and left arm**
- **Right leg — saphenous and popliteal veins**
- **Neck and head — external jugular and temporal (scalp) veins**
- **Realistic flashback of simulated “blood” confirms proper needle location in the vein**
- **Lifelike umbilicus allows repeated catheterization of the umbilical catheter, with proper placement verified by a blood return with redesigned umbilical valve**
- **Nasal and oral openings allow placement of nasal cannulas, as well as endotracheal, nasogastric, and feeding tubes to teach suctioning, securing, dressing, cleansing, care, and maintenance**

Nita Newborn™ includes a flexible body, blue veins made from latex-free Dermalike™, translucent “skins” on the head, right and left arms, left leg, fluid bag with attached tubing, simulated blood, diaper, and soft carrying case. Sh. wt. 4.75 lbs. (2.15 kg).

SB23925U



PEDI® Blue Neonatal Simulator with SmartSkin™ Technology

Sized to simulate a newborn during its first 28 days of life, this neonatal simulator features full-size articulating neonate; realistic airway with tongue, vocal cords, trachea, and esophagus; heart, lungs, ribs, stomach, and liver; BVM or CPR; oral or nasal intubation plus suctioning; and bilateral lung expansion with realistic chest rise. Allows neonatal personnel to practice incubating or perform CPR. The simulator's cricoid prominence permits the Sellick maneuver. Choose to present the neonate as healthy, with peripheral cyanosis or with central cyanosis. The simulator has the unique ability to change color based upon an initial pre-selected condition and the effectiveness of airway ventilation and chest compression provided. A Code Blue® monitor, containing a small computer, observes ventilations and compressions and determines whether they meet or exceed conventional neonatal CPR standards. If acceptable, the monitor causes the skin to turn to a healthier color. If ventilations and compressions are determined to be inadequate or nonexistent, the monitor causes the skin to turn toward an ominous blue color. Simulator components: PEDI® Blue neonate, neonatal monitor, international power supply 100-240V AC, connecting cables, instruction manual, and carrying bag. Sh. wt. 13 lbs. (5.89 kg).

SB34989U

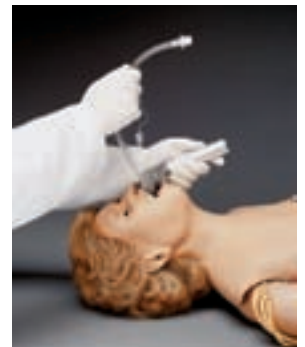
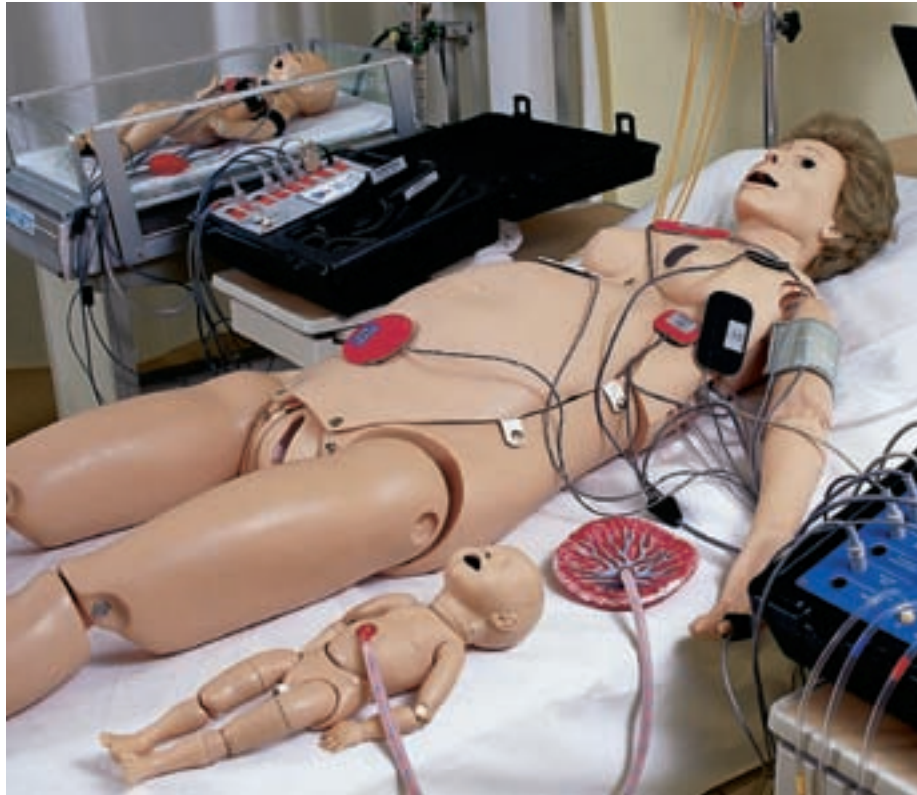


PEDI® Premie Simulator with SmartSkin™ Technology

PEDI® Premie is designed to simulate a 28-week neonate. Comes with a Code Blue® monitor which observes ventilations and compressions. If correct ventilations and compressions are applied, the monitor causes the skin to turn to a more healthy color. If incorrect, the monitor causes the skin to turn to an ominous blue color. Features: full articulation; intubation using a 2.5 ETT and stylet, or use a BVM, and observe chest rise; skin color is controllable and exhibits healthy color, peripheral cyanosis, or central cyanosis; improvement or deterioration in color depends upon how well resuscitation is performed; IV arm; bilateral scalp veins; patent umbilical vein for meds with flashback; base of umbilicus pulses using squeeze bulb; patent umbilical artery; and bilateral heel sticks. One-year limited warranty.

Sh. wt. 7.50 lbs. (3.40 kg).

SB37545U



NOELLE™ Maternal and Neonatal Birthing Simulator with PEDI® Blue Neonate

Designed to provide a complete birthing experience before, during, and after delivery. Features: articulating full-body female manikin, intubatable airway with chest rise, IV arm for meds/fluids, removable stomach cover, practice C-section and forceps delivery, practice Leopold maneuvers, multiple fetal heart sounds, automatic birthing system, measure head descent and cervical dilation, multiple placenta locations, replaceable dilating cervixes, practice postpartum suturing on three vulval inserts, one articulating birthing baby with placenta, and PEDI® Blue Neonatal Simulator with SmartSkin™ technology. The PEDI® Blue Neonatal Simulator has the unique ability to change color based upon an initial pre-selected condition and the effectiveness of airway ventilation and chest compression provided. A Code Blue® monitor, containing a small computer, observes ventilations and compressions and determines whether they meet or exceed conventional neonatal CPR standards. If acceptable, the monitor causes the skin to turn to a more healthy color. If ventilations and compressions are determined to be inadequate or nonexistent, the monitor causes the skin to turn toward an ominous blue color. The manikin comes with four umbilical cords, four dilating cervixes, two umbilical clamps, three vulva for postpartum suturing, neonatal monitor, international power supply (100-240V AC), connecting cables, talcum powder, water-soluble silicone lubricant, instruction manual, and carrying bag. One-year limited warranty. Sh. wt. 110 lbs. (49.89 kg).

SB37713U





Embryo Development Set

Chronological series of nine enlarged embryological models — total of 17 numbered parts with key card. Sh. wt. 11 lbs. (4.98 kg).

Photo Key:

1. Uterus with embryo in the first month of pregnancy (1 part)
2. Uterus with embryo in the 2nd month of pregnancy (2 parts)
3. Uterus with embryo in the 3rd month of pregnancy (2 parts)
4. Uterus with fetus in prone position in the 4th-5th month of pregnancy (2 parts)
5. Uterus with fetus in breech presentation in the 5th month of pregnancy (2 parts)
6. Uterus with fetus lying on its back in the 5th month of pregnancy (2 parts)
7. Uterus with twin fetuses in the 5th month of pregnancy (3 parts)
8. Uterus with fetus in normal position in the 7th month of pregnancy (2 parts)
9. Embryo in the 1st month of pregnancy, enlarged 30 times

SB39006U



Human Reproduction and Development Kit

There's no better way to depict the actual size and developmental stages of a fetus than with these incredibly realistic replicas! A thorough multimedia program, this kit presents an in-depth look at embryo and fetus development in humans. The accompanying text and teaching guide provide background information and study questions and include transparencies and blackline masters. The videotape titled *The Miracle of Life* along with the transparencies tells the fascinating story of embryonic and fetal growth. The blackline masters highlight important study points for students. The dramatic **Life/form**® reproductions show the stages of human development in a unique, innovative way — plastic models and replicas each student can examine and study. The kit offers a direct and complete approach to an understanding of human reproduction from fertilization to birth. Sh. wt. 16 lbs. (7.25 kg).

Nasco's total teaching program offers nine realistic **Life/form® reproductions, four models of the early stages of the embryo, five actual replicas of the growing fetus, plus *The Miracle of Life* video and detailed text and teaching guide with 13 transparencies and 12 blackline masters.**

WA15715U